

## **Skaner laserowy 3D SLAM FJD F1 Trion**



**FJD Trion™ S1**

3D LIDAR SCANNER





**MAXNET**  
Lech Wereszczyński

ul. Walecznych 11/8 03-916 Warszawa  
Tel./Fax (22) 561 07 84 [www.eu-maxnet.pl](http://www.eu-maxnet.pl)  
NIP 1130791058 REGON 015871387

---

## A NEW WAY TO SCAN THE WORLD

A new way to "see" the world around you.

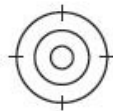
With 320,000 scan points per second, S1 catches high-quality scans hands down.

With an industry-leading SLAM algorithm, S1 captures, processes, and displays accurate point clouds on the mobile terminal in real-time.



**320,000**

Points per Second



**2 cm\***

Relative Accuracy



**16**

Sensors

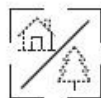


**120 m**

Range



Real-Time Point  
Cloud



Indoor & Outdoor  
Scanning



Lightweight  
and More Portable



Dual Battery  
Hot-swappable

---

**Różnorodne, sprawdzone, wydajne systemy pomiarowe w atrakcyjnych cenach**



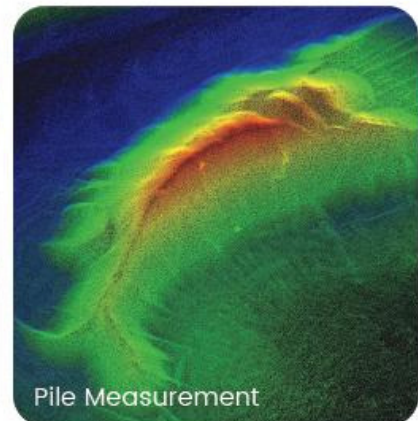
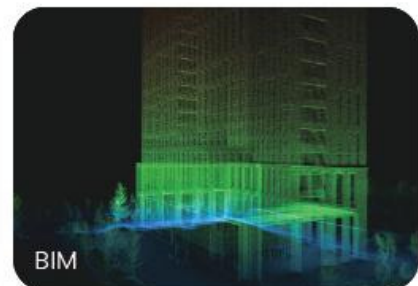
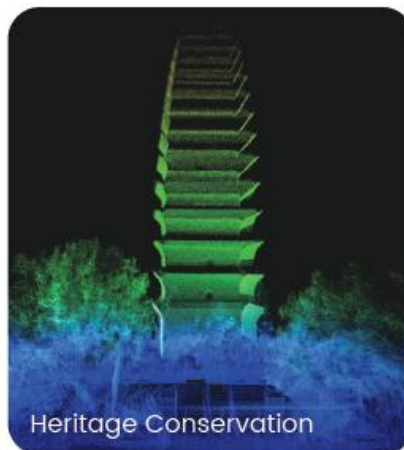
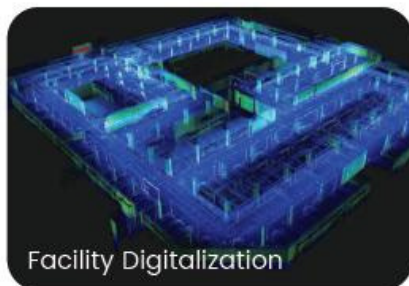
**MAXNET**  
Lech Wereszczyński

ul. Walecznych 11/8 03-916 Warszawa  
Tel./Fax (22) 561 07 84 [www.eu-maxnet.pl](http://www.eu-maxnet.pl)  
NIP 1130791058 REGON 015871387

---

## APPLICATION SCENARIOS

Indoor, outdoor and even underground without a GNSS receiver.



---

***Różnorodne, sprawdzone, wydajne systemy pomiarowe w atrakcyjnych cenach***

## AS VERSATILE AS IT IS PORTABLE

Lightweight design for easy portability.  
Real-time point cloud display and SLAM processing.





**MAXNET**  
Lech Wereszczyński

ul. Walecznych 11/8 03-916 Warszawa  
Tel./Fax (22) 561 07 84 [www.eu-maxnet.pl](http://www.eu-maxnet.pl)  
NIP 1130791058 REGON 015871387

---

## YOUR POINT CLOUD STUDIO



### FJD TRION SCAN

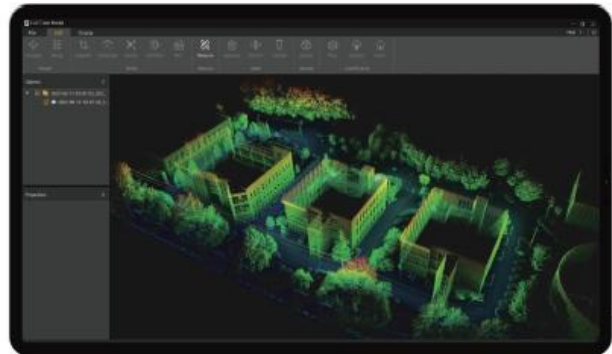
Real-Time Visualization of 3D Point Clouds Software

- Displays the scanned project files, storage capacity, and battery life
- Visualizes the point cloud in real-time
- Tracks real-time path
- Manages and downloads the project files

### FJD TRION MODEL

Point Cloud Post-Process Software

- Denoises and colorizes point clouds
- Stitches point clouds, maps shadow, transforms coordinates, and does automatic plane fitting
- Classifies point clouds, produces 2D drawings, and builds 3D models



---

***Różnorodne, sprawdzone, wydajne systemy pomiarowe w atrakcyjnych cenach***





**MAXNET**  
Lech Wereszczyński

ul. Walecznych 11/8 03-916 Warszawa  
Tel./Fax (22) 561 07 84 [www.eu-maxnet.pl](http://www.eu-maxnet.pl)  
NIP 1130791058 REGON 015871387

## QUICK SPECS

<b>Range</b>	120 m	<b>Sensors</b>	16
<b>FOV</b>	360°×270°	<b>Laser Class</b>	Class 1 / λ 905 nm
<b>Points per Second</b>	320,000	<b>Relative Accuracy</b>	2 cm*
<b>Display</b>	Real-time preview on mobile terminal	<b>Processing</b>	Real-time
<b>Datalogger Weight (Incl. single battery)</b>	2.2 kg	<b>Carrier</b>	Backpack or shoulder strap
<b>Battery Life (Dual battery)</b>	4 hours	<b>Scanner Weight</b>	1.8 kg
<b>Ingress Protection</b>	IP54	<b>Storage Capacity</b>	512 GB

\*Measured in experimental environment



**Różnorodne, sprawdzone, wydajne systemy pomiarowe w atrakcyjnych cenach**