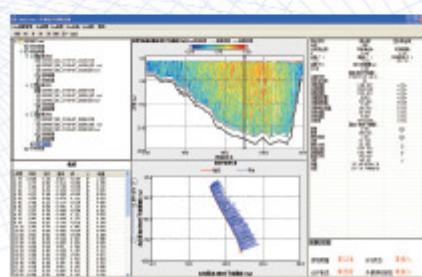


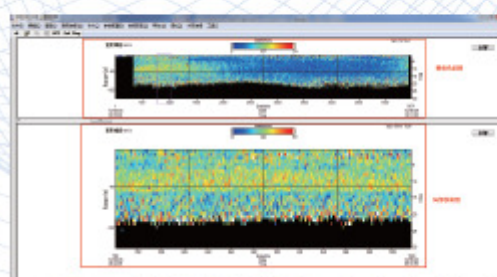
Type	RIV-300	RIV-600	RIV-1200
Current profiling			
Frequency	300kHz	600kHz	1200kHz
Profiling range	1~120m	0.4~80m	0.2~35m
Velocity range	±5m/s	±5m/s	±10m/s
Accuracy	±0.5%±5mm/s	±0.25%±2mm/s	±0.3%±3mm/s
Resolution	1mm/s	1mm/s	1mm/s
Layer size	1~8m	0.25~4m	0.1~2m
Number of layers	1~260	1~260	1~260
Data output rate	1Hz	1Hz	1Hz
Bottom tracking			
Frequency	300kHz	600kHz	1200kHz
Depth range	2~200m	1~120m	0.7~35m
Accuracy	±0.5%±5mm/s	±0.25%±2mm/s	±0.3%±3mm/s
Velocity range	±10m/s	±10m/s	±10m/s
Data output rate	1Hz	1Hz	1Hz
Transducer & hardware			
Beam angle	20°	20°	20°
Beam width	4°	2°	2°
Configuration	4 beams, JANUS		
Storage	8G standard, 16G, 32G or higher capacity optional		
Communications	RS422, RS232 or 10M Ethernet		
House material	POM (standard), titanium, aluminum optional (depends on the depth rating required)		
Sensors			
Temperature	Range: -10°C– 85°C; Accuracy: ±0.5°C;		Resolution: 0.01°C
Motion	Range: ±50°;	Accuracy: ±0.2°;	Resolution: 0.01°
Heading	Range: 0–360°;	Accuracy: ±0.5°(calibrated);	Resolution: 0.1°
Power supply			
Power consumption	≤10W		
DC input	10.5V–36V		

Type	RIV-300	RIV-600	RIV-1200
Weight & dimension			
Dimension	236mm(H)x230mm (Dia)	236mm(H)x225mm(Dia)	236mm(H)x202mm(Dia)
Weight	8kg in air (standard)	7.5kg in air, 5kg in water (standard)	7kg in air (standard)
Performance			
Depth rating	100m/500m/2000m/4000m/6000m		
Operation Temp.	-5° - 45°C, relative humidity≤93%		
Storage Temp.	-25° - 65°C, relative humidity≤93%		
Software	IOA river current measurement software with acquisition and navigation modules		

Issue(10.18)



Software interface



Data replay



Applied in ripple-hulled vessels



Certified by China's Ministry of Water Resource